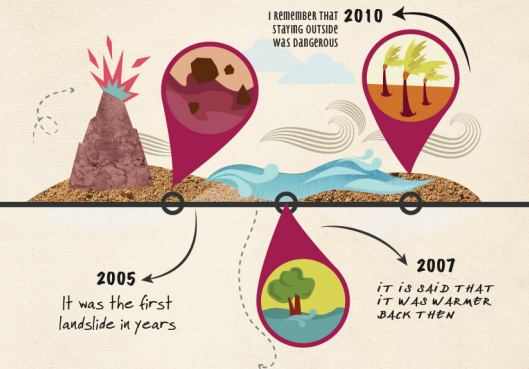




Historical Profile

Weaving memories



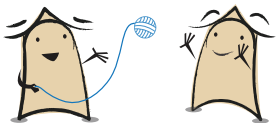
4 h



PASSA
Youth



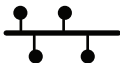
Break the ice (all)



**Remember events
of the community (groups)**



Order chronologically (all)



Build a digital timeline (all)





Community map

Identifying strengths and vulnerabilities



4 h



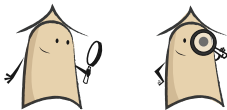
Create a map of your community (groups)



Plan the visit on the croquis (all)



Visit the area of interest according to the plan and gather evidence! (all)



Complete the maps with findings from the visit (groups)





Frequency and impact of hazards

Discovering patterns



4 h



PASSA
Youth



**Classify hazards by
element of origen (groups)**



**Order according to frequency
in the community (groups)**



Separate by impact (groups)

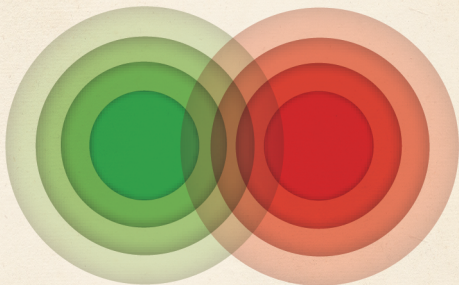


**Select the most frequent with
higher impact (all)**



Safe and unsafe shelter and settlements

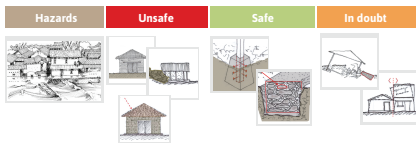
Recognizing vulnerabilities



4 h



Classify illustrations corresponding to prioritized hazards in 'unsafe', 'safe' and 'in doubt' (groups)



Illustrate other characteristics that make shelters 'unsafe' or 'safe' (groups)





Options for solutions

Brainstorming



4 h



PASSA
Youth



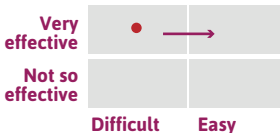
Write ideas, each on a separate piece of paper or self-adhesive label (groups)



Pitch a solution in 1 minute (each youth)



Analyse all viable solutions per hazard and place them in each of the possibilities charts (all)

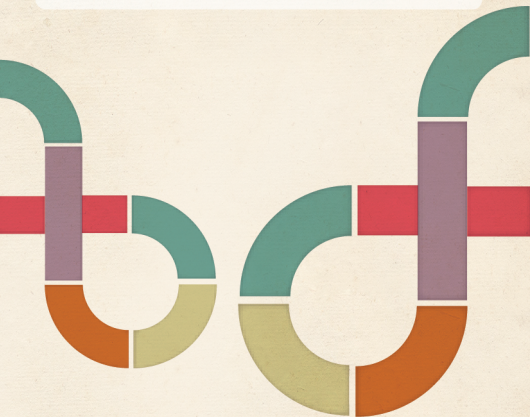


Prototype, showcase and get feedback! (groups)



Planning for change

Opening paths



4 h



PASSA
Youth



Place unsafe present on the left and safe future on the right (all)



Unsafe



Safe

Intersperse steps to move from one to the other (groups)



Unsafe



Safe

Order plans with the top priority above (all)

 **Top priority plan**

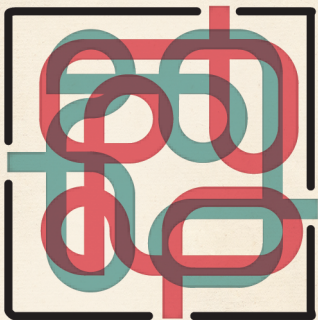


Assign responsibilities (all)



Problem box

Thinking about the future



4 h



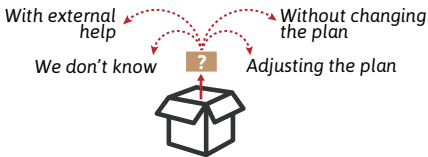
Revise the plan imagining obstacles in the form of a question (all)



Gather all the questions inside a box (all)



Take turns taking out problems answering each question and classifying answers in 1 of 4 sets (all)



Adjust the plan (leaders)



Monitoring plan

Making decisions



4 h



**Decide how to monitor
(groups)**



Plan for future actions (all)



**Showcase and get feedback
from the community**



Celebrate (all)





PASSA

Youth

PASSA CARDS

This is a set of cards, one for each activity, which have the main steps and a summary of key information of the activities. The cards do not replace the manual but can be used as a reminder when you are clear about the process and have had experience with PASSA Youth.



International Federation
of Red Cross and Red Crescent Societies

www.ifrc.org Saving lives, changing minds.

In collaboration with



Habitat
for Humanity®